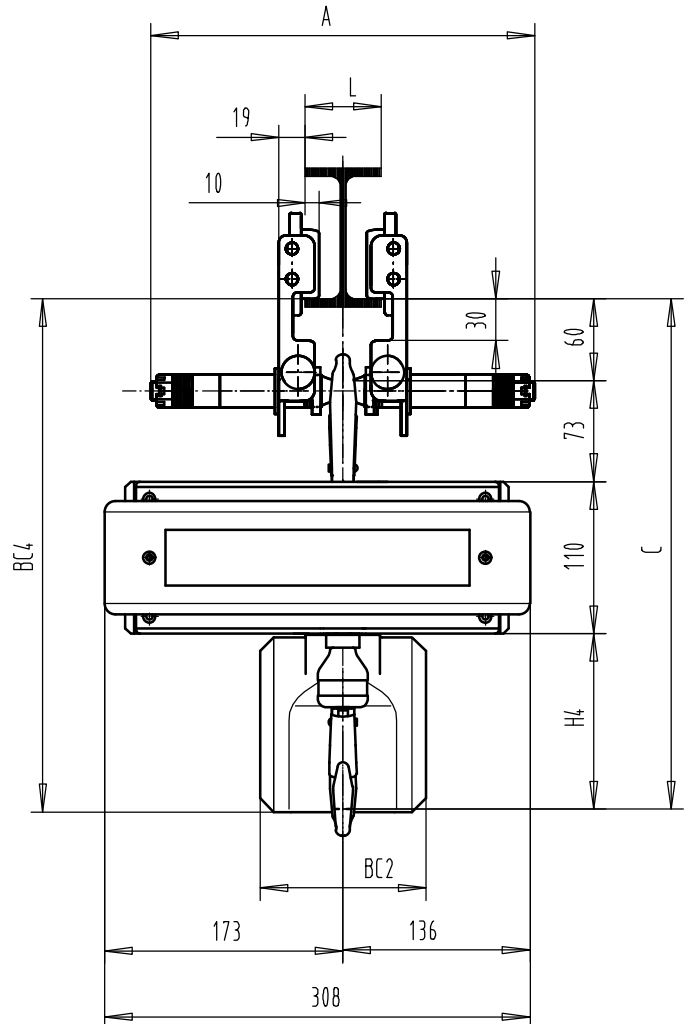
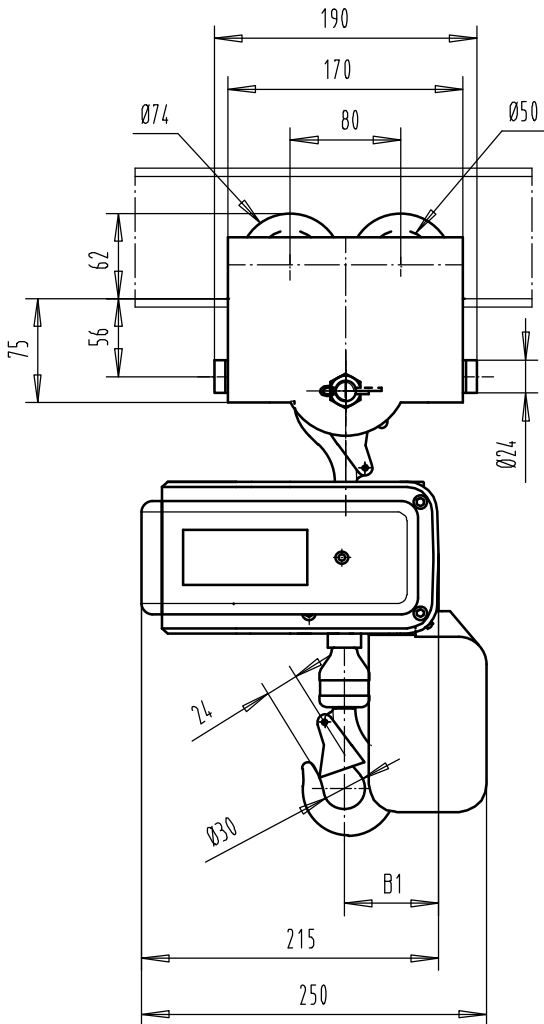


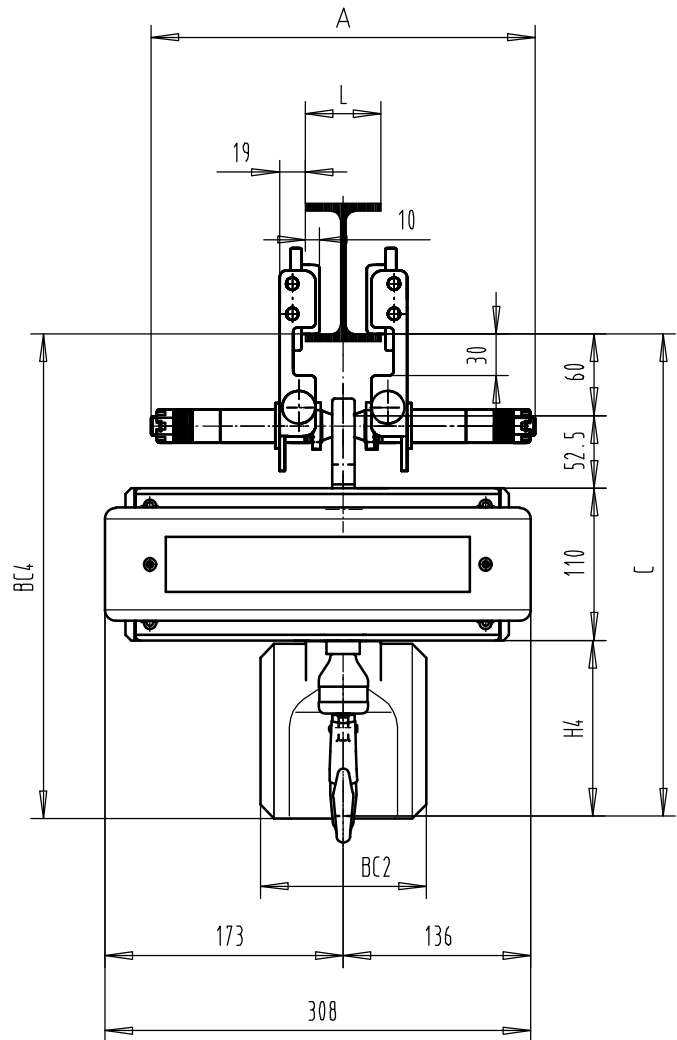
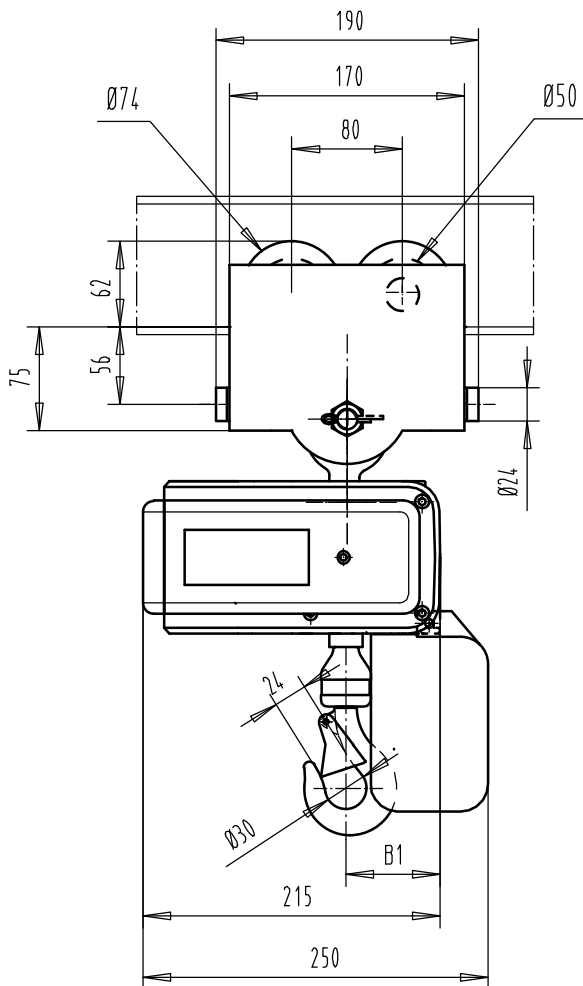
Mit Schiebefahrwerk FND (Quer zur Kettenzugachse)
 Hooked to FND Manual trolley (Perpendicular version)
 Accroché à Chariot manuel FND (Version perpendiculaire)



Chain bag Capacity	H1	C	B1	BC4			BC2			kg
				<7m	<16m	<30m	<7m	<16m	<30m	
1 Brin/1 Fall	127	370	68	372	434	519	120	130	130	17.5
2 Brins/2 Falls	151	394	83	372	434	519	120	130	130	18.5

	A
50<L<202	278

Mit Schiebefahrwerk FND (Quer zur Kettenzugachse)
Fixed to FND Manual trolley (Perpendicular version)
Accouplé à Chariot manuel FND (Version perpendiculaire)



Chain bag capacity	H4	C	B1	BC4			BC2			kg
				<7m	<16m	<30m	<7m	<16m	<30m	
1 Brin/1 Fall	127	349	68	351	413	498	120	130	130	17.5
2 Brins/2 Falls	151	373	83	351	413	498	120	130	130	18.5

A
50<L<202