

## 75 NORMAL HEADROOM HOIST NC, REEVING: 06

### Hoisting speed (m/min)

Load kg	Class Fem/ISO	F gear + P3/T3 motor		H gear + P4/T4 motor	
		High	Low	High	Low
6000	3m/M6	3,2	0,5	5	0,8
7500	2m/M5	3,2	0,5	5	0,8

### Hoist dimensions

HOL m	Length code	M1 mm	M3 mm	H2 mm	Weight kg
6	C	567	600	49	560
8	D	667	600	65	565
10	E	787	600	85	610

### Motor dimensions

Motor	P3	P4	T3	T4
M2 (mm)	597	690	507	610
Weight ( kg)	35	53	22	45

### Trolley dimensions

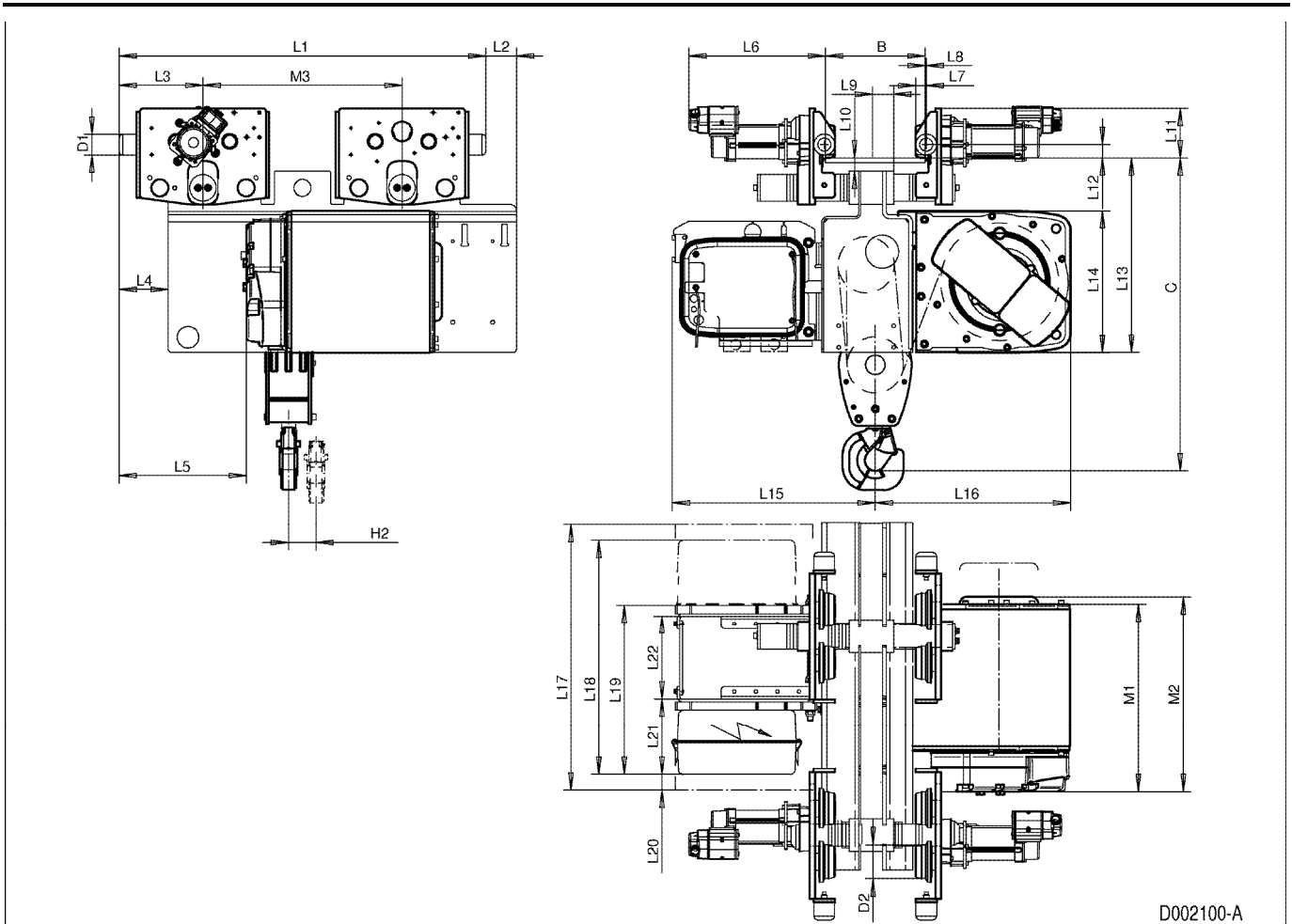
B min	B max	C	D1 (∅)	D2 (∅)	H1						
100	450	1016	63	100	127						
L1	L2	L3	L4	L5	L6	L7	L8	L9	L10	L11	L12
1106	92	253	148	384	412	32	4	65	40	150	40
L13	L14	L15	L16	L17	L18	L19	L20	L21	L22		
588	428	612	589	800	706	511	47	228	250		

D002100\_A  
062185

Note: Weight calculated with P3, when B=300.

Note: All dimensions in mm.

Note: L19 with one cubicle only, L18 with optional cubicle, L17 with two RST cubicles.



D002100-A