

71 NORMAL HEADROOM HOIST NC, REEVING: 02

Hoisting speed (m/min)

Load kg	Class Fem/ISO	E gear + P3/T3 motor		F gear + P3/T3 motor		H gear + P4/T4 motor	
		High	Low	High	Low	High	Low
2000	3m/M6	8	1,3	10	1,7	16	2,7
2500	2m/M5	8	1,3	10	1,7	16	2,7
3200	1Am/M4	8	1,3	-	-	-	-

Hoist dimensions

HOL m	Length code	M1 mm	H2 mm	Weight kg
12	B	467	98	350
18	C	567	147	390
24	D	667	198	420
30	E	787	258	480

Motor dimensions

Motor	P3	P4	T3	T4
M2 (mm)	597	690	507	610
Weight (kg)	35	53	22	45

Trolley dimensions

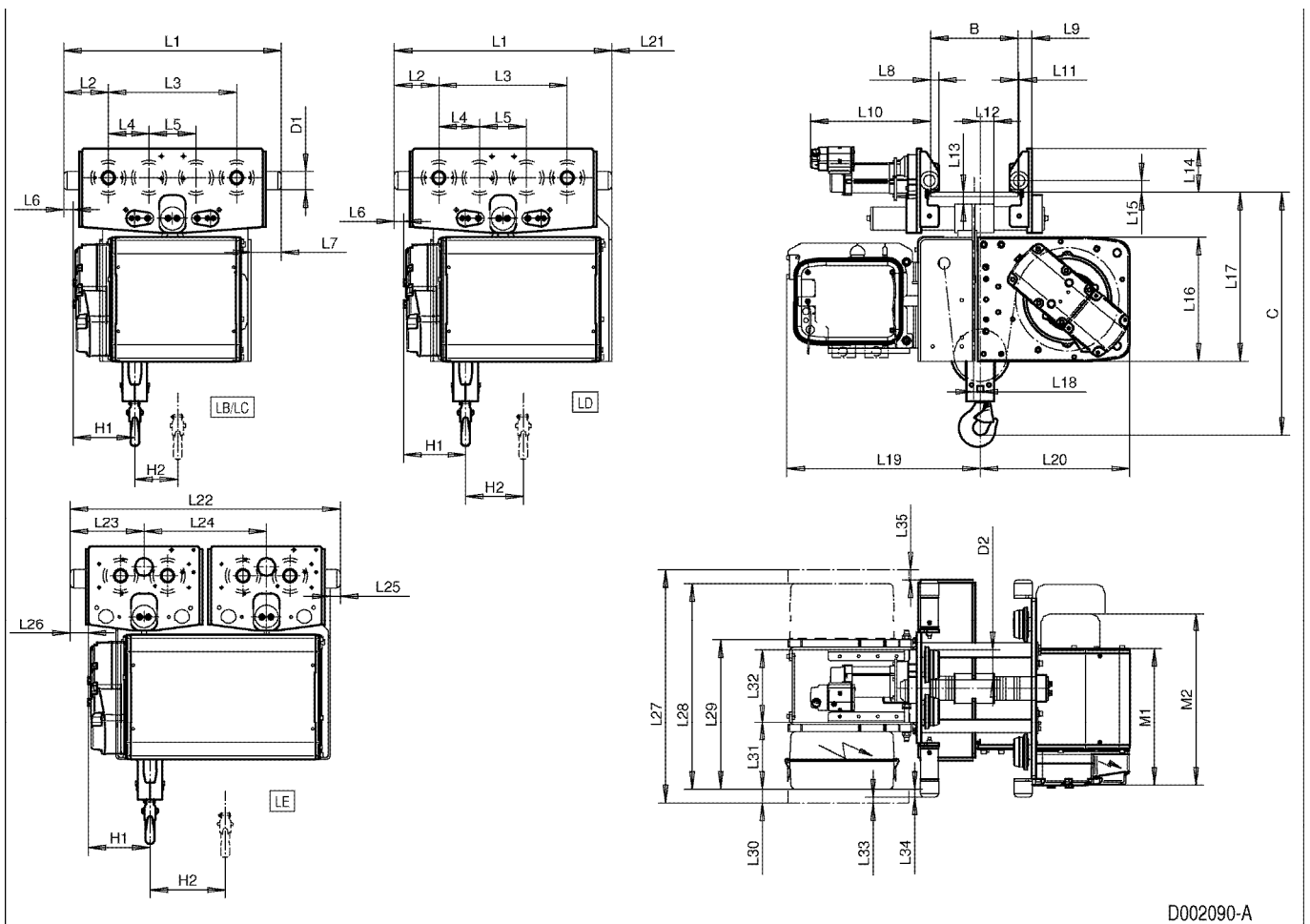
B min	B max	C	D1 (Ø)	D2 (Ø)	H1						
120	450	835	63	100	212						
L1	L2	L3	L4	L5	L6	L7	L8	L9	L10	L11	L12
746	153	440	139	161	33	104	28	48	412	4	47
L13	L14	L15	L16	L17	L18	L19	L20	L21	L22	L23	L24
40	150	40	426	581	23	664	512	0	926	253	420
L25	L26	L27	L28	L29	L30	L31	L32	L33	L34	L35	
35	62	800	706	511	47	228	250	20	27	34	

D002090_A
062140

Note: Weight calculated with P3, when B=300mm.

Note: All dimensions in mm.

Note: L29 with one cubicle only, L28 with optional cubicle, L27 with two RST cubicles.



D002090-A