

### 33 DOUBLE GIRDER HOIST NE, REEVING: 2 X 08

**Hoisting speed (m/min)**

Load kg	Class Fem/ISO	E gear		F gear		G gear		G gear		H gear		H gear	
		High	Low	High	Low	High	Low	High	Low	High	Low	High	Low
		2	0,3	2,5	0,4	3,2	0,5	3,2	-	4	-	5	-
32000	2m/M5	P6/T6 motor		P7/T7 motor		-		T8 motor		T9 motor		TA motor	
40000	1Am/M4	P6/T6 motor		P7/T7 motor		P8/T8 motor		-		T9 motor		TA motor	

**Hoist dimensions**

HOL m	Length code	M2 mm	M3 mm	Min R mm	Max R mm	Weight kg
5,5	F	832	434	1700	2400	2190
7	G	1022	489	2000	2700	2250
9,5	H	1272	364	2000	3100	2410
13	J	1622	389	2400	3400	2610
15,5	K	1922	389	2700	4200	2840
19	L	2272	414	3100	4200	3070
21,5	M	2522	439	3400	4200	3250
24,5	N	2822	489	3800	4200	3510

**Motor dimensions**

Motor	P6	P7	P8	T6	T7	T8	T9	TA
M2 (mm)	536	576	711	536	536	536	536	576
Weight ( kg)	85	105	106	65	71	81	92	106

**Trolley dimensions**

C	D1 (Ø)	D2 (Ø)	D3 (Ø)	WB	WW min	WW max					
1279	200	230	80	1400	55	100					
L1	L2	L3	L4	L5	L6	L7	L8	L9	L10	L11	L12
428,7	400	187	514	123	27	1826	702	605	88	690	710
L13	L14	L15	L16	L17	L18	L19	L20	L21	L22		
930	923	44	218	213	900	186	255	213	1700		

D002160\_A  
005052

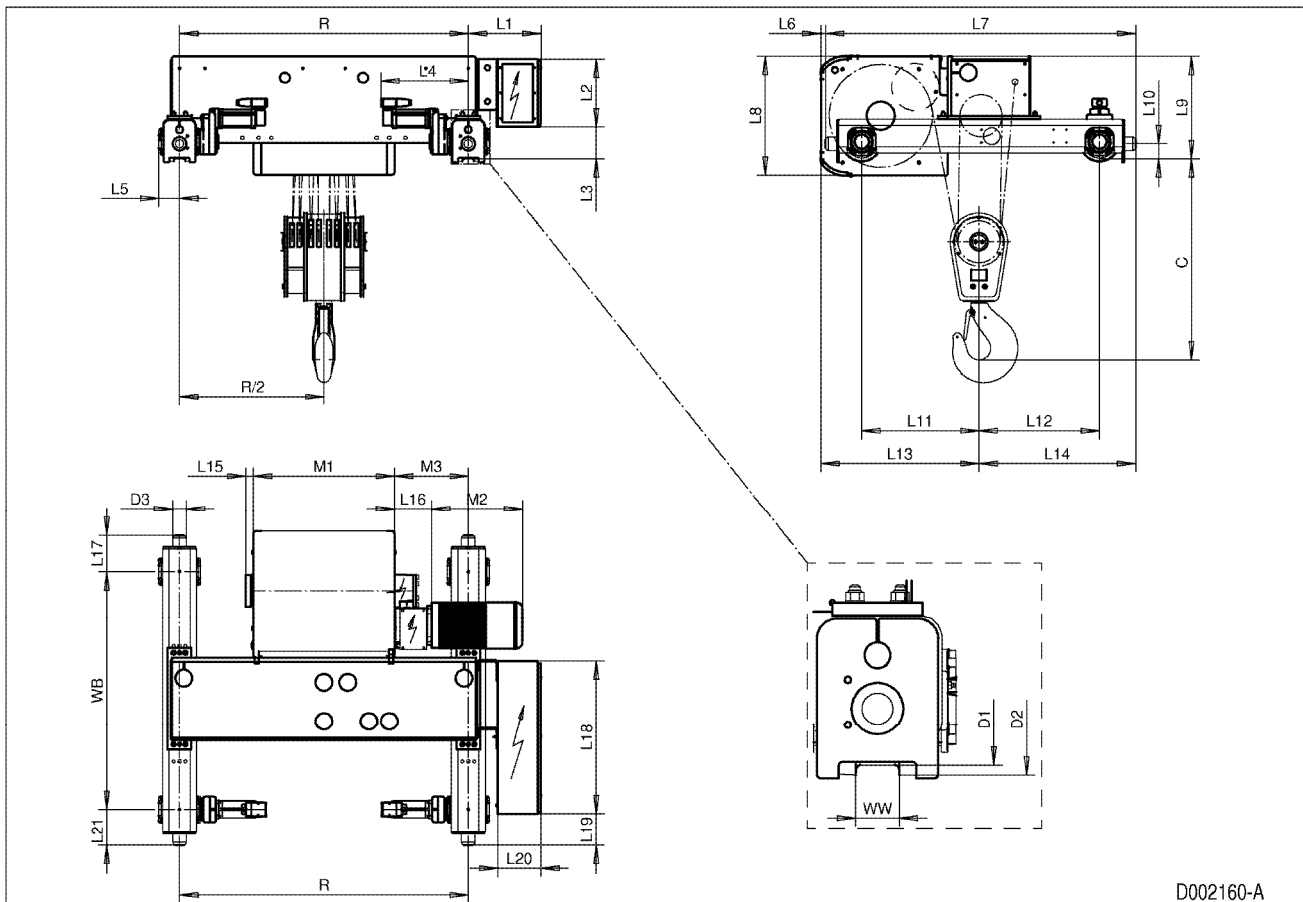
Note: Weight calculated with P6 motor.

Note: All dimensions in mm.

Note: Min R with service platform.

Note: Standard rail gauges: 1400, 1700, 2000, 2400, 2700, 3100, 3400, 3800 and 4200.

Note: M3 and weight calculated with the Min R.



D002160-A