

31 DOUBLE GIRDER HOIST NE, REEVING: 2 X 04

Hoisting speed (m/min)

Load kg	Class Fem/ISO	E gear		F gear		G gear		H gear		J gear	
		High	Low	High	Low	High	Low	High	Low	High	Low
		4	0,7	5	0,8	6,3	1,1	8	-	10	-
12500	3m/M6	P6/T6 motor		P6/T6 motor		P7/T7 motor		T8 motor		T9 motor	
16000	2m/M5	P6/T6 motor		P6/T6 motor		P7/T7 motor		T8 motor		T9 motor	
20000	1Am/M4	P6/T6 motor		P7/T7 motor		P8/T8 motor		T9 motor		TA motor	

Hoist dimensions

HOL m	Length code	M1 mm	M3 mm	Min R mm	Max R mm	Weight kg
8	E	682	359	1400	2400	1730
11	F	832	434	1700	2400	1830
14,5	G	1022	339	1700	2700	1900
19,5	H	1272	364	2000	3100	2050
26	J	1622	389	2400	3400	2260
31,5	K	1922	389	2700	4200	2490
38,5	L	2272	414	3100	4200	2720
43	M	2522	439	3400	4200	2830
49	N	2822	489	3800	4200	3160

Motor dimensions

Motor	P6	P7	P8	T6	T7	T8	T9	TA
M2 (mm)	536	576	711	536	536	536	536	576
Weight (kg)	85	105	106	65	71	81	92	106

Trolley dimensions

C	D1 (Ø)	D2 (Ø)	D3 (Ø)	WB	WW min	WW max					
1104	140	170	63	1400	50	85					
L1	L2	L3	L4	L5	L6	L7	L8	L9	L10	L11	L12
428	472	400	122	100	51	1726	702	540	100	705	695
L13	L14	L15	L16	L17	L18	L19	L20	L21			
919	858	44	218	163	900	117	255	163			

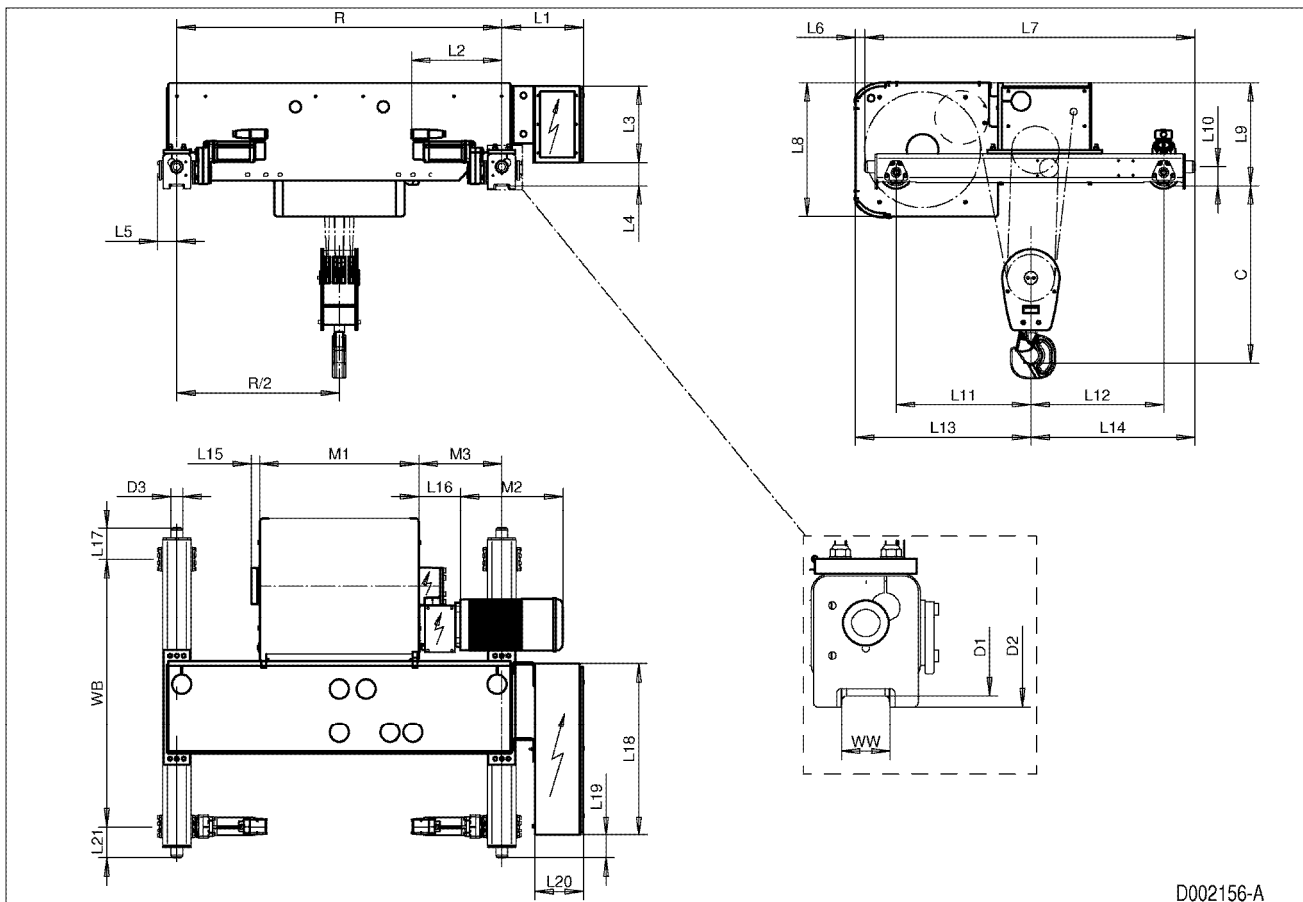
D002156_A
005048

Note: Weight calculated with P6 motor.

Note: All dimensions in mm.

Note: Standard rail gauges: 1400, 1700, 2000, 2400, 2700, 3100, 3400, 3800 and 4200.

Note: M3 and weight calculated with the Min R.



D002156-A