

## 18 DOUBLE GIRDER HOIST ND, REEVING: 02

### Hoisting speed (m/min)

Load kg	Class Fem/ISO	E gear + P5/T5 motor		F gear + P5/T5 motor		H gear + P6/T6 motor		J gear + P7/T7 motor	
		High	Low	High	Low	High	Low	High	Low
4000	3m/M6	8	1,3	10	1,7	16	2,7	20	3,3
5000	2m/M5	8	1,3	10	1,7	16	2,7	20	3,3
6300	1Am/M4	8	1,3	-	-	-	-	-	-

### Hoist dimensions

HOL m	Length code	M1 mm	M2 mm	H1 mm	H2 mm	Min R mm	Weight kg
18	D	697	259	558	176	1400	650
24	E	817	259	558	235	1400	675
32	F	967	372	671	309	1700	720
40	G	1157	522	821	403	2000	760

### Motor dimensions

Motor	P5	P6	P7	T5	T6	T7
M3 (mm)	728	722	762	728	722	722
Weight ( kg)	58	85	105	45	65	71

### Trolley dimensions

C	D1 (Ø)	D2 (Ø)	D3 (Ø)	WB	WW min	WW max					
476	110	140	63	1000	50	75					
L1	L2	L3	L4	L5	L6	L7	L8	L9	L10	L11	L12
430	382	400	15	98	1296	100	420	467	533	615	681
L13	L14	L15	L16	L17							
148	88	900	148	255							

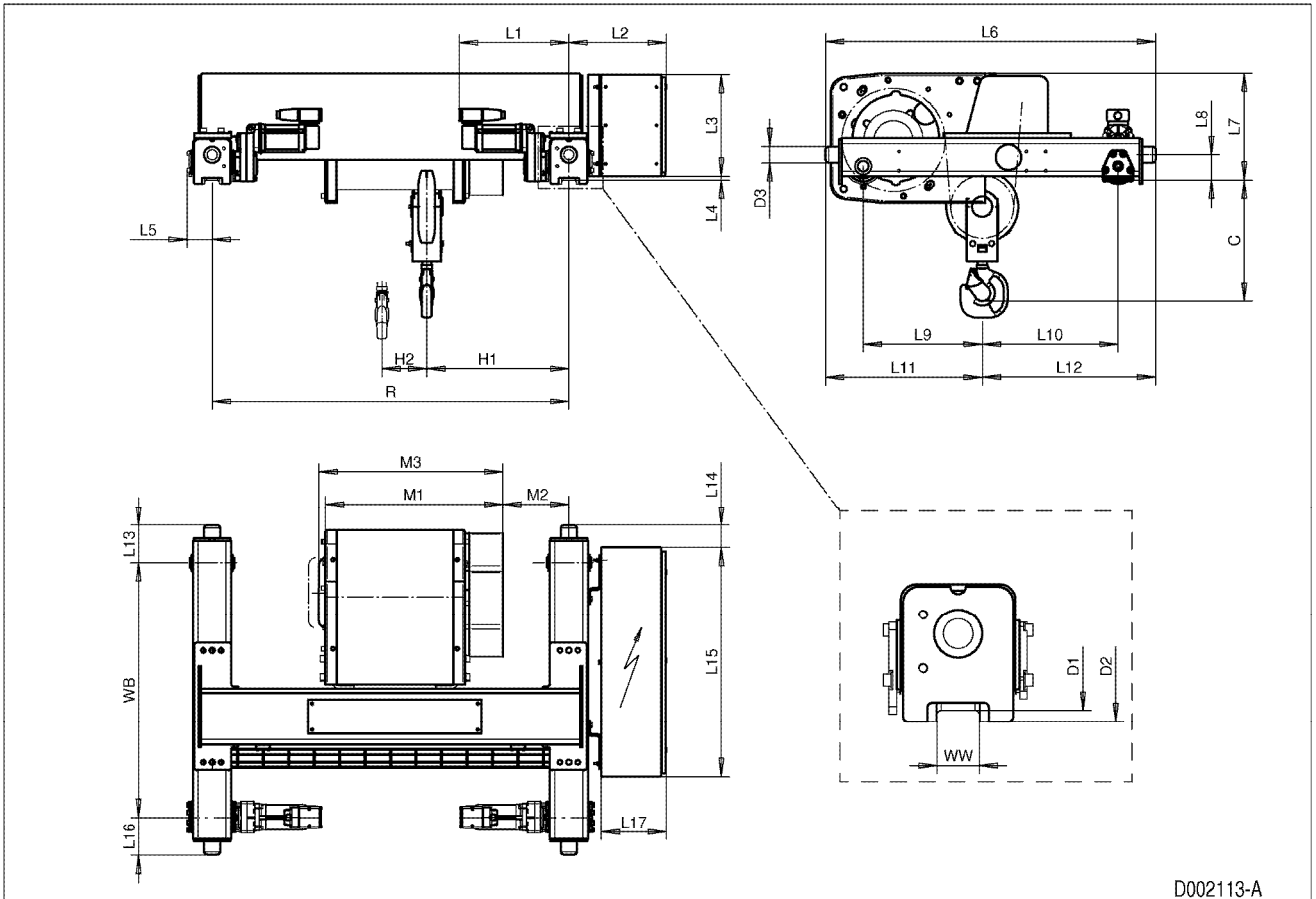
D002113\_A  
005020

Note: Weight calculated with P5 motor.

Note: All dimensions in mm.

Note: Min R with service platform and second brake.

Note: Standard rail gauges: 1400, 1700 and 2000.



D002113-A