

7 LOW HEADROOM HOIST NC, REEVING: A2

Hoist dimensions

HOL m	Length code	M1 mm	H2 mm	H3 mm	H3* mm	BUF mm	Weight kg
22.5	C	456	144	568	584	624	320
30	D	556	193	568	584	724	340

Motor dimensions

Motor	P2	P4	A3	S3	S5
MOT (mm)	446	574	443	523	602
Weight (kg)	35	53	32	28	53

Trolley dimensions

B min.	B max	ØWD	ØBU	BU	BUH	E1	E2	GEA	H1	H4	TD
100	490	100	63	168	42	8	628	116	258	536	203
TF	TH	TW									
45	241	38									

D002106_A
062531

C-dimensions

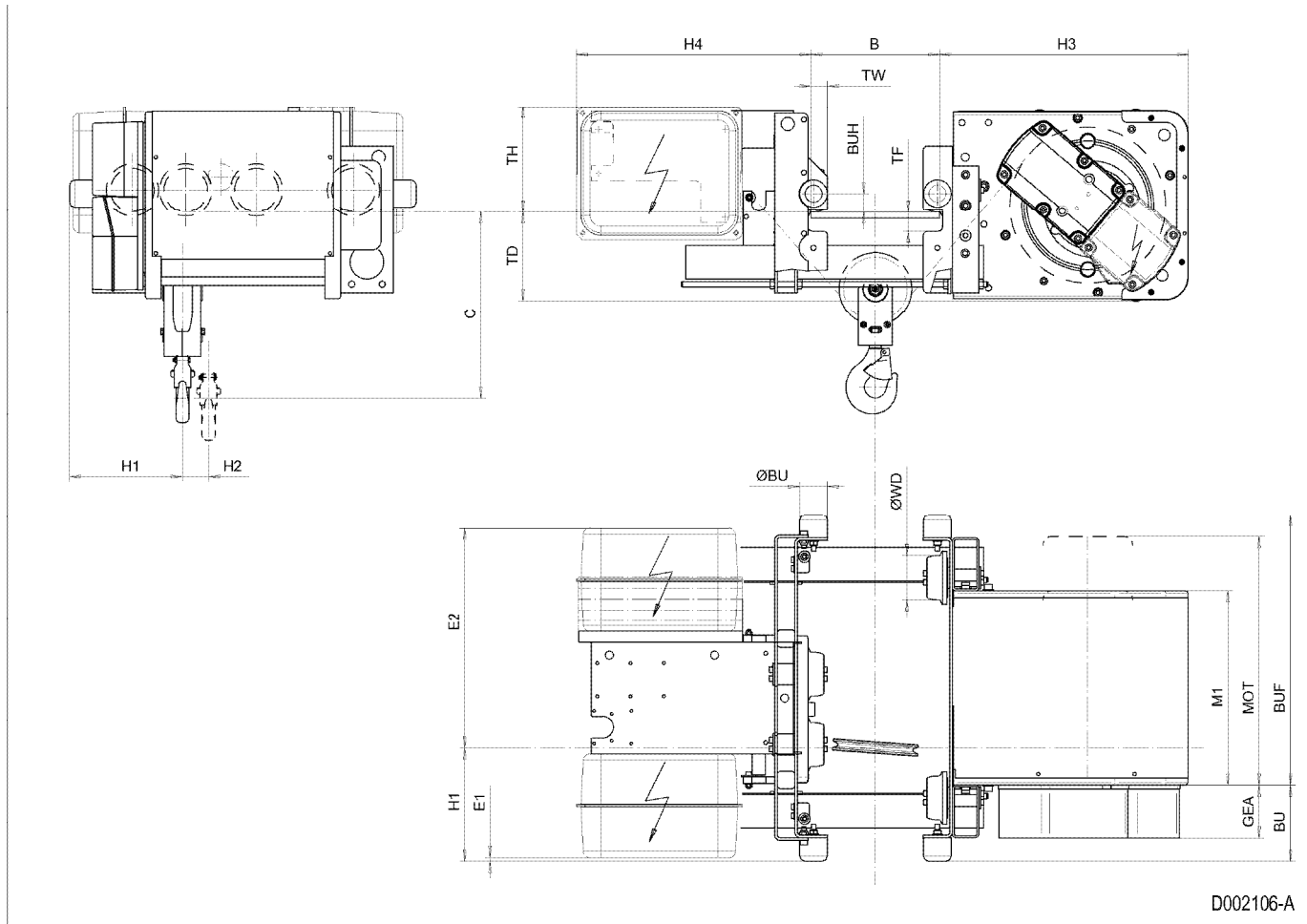
B	C
100 - 250	410
251 - 300	440
301 - 350	475
351 - 400	505
401 - 450	540
451 - 490	570

Note: All dimensions in mm.

Note: Weight calculated with P2 motor.

* Please, disregard the dimension H3*.

Low Headroom Hoist NC, REEVING: A2



D002106-A