

## 5 LOW HEADROOM HOIST NC, REEVING: 04

### Hoist dimensions

HOL m	Length code	M1 mm	H2 mm	H3 mm	H3* mm	BUF mm	Weight kg
6	B	356	49	568	584	524	330
9	C	456	74	568	584	624	350
12	D	556	99	568	584	724	370

### Motor dimensions

Motor	P3	P4	A3	S3	S5
MOT (mm)	473	574	443	523	602
Weight (kg)	35	53	32	28	53

### Trolley dimensions

B min.	B max.	ØWD	ØBU	BU	BUH	E1	E2	GEA	H1	H4	TD
100	490	100	63	168	42	8	548	116	338	536	203
TF	TH	TW									
45	241	38									

D002092\_A  
062166

### C-dimensions

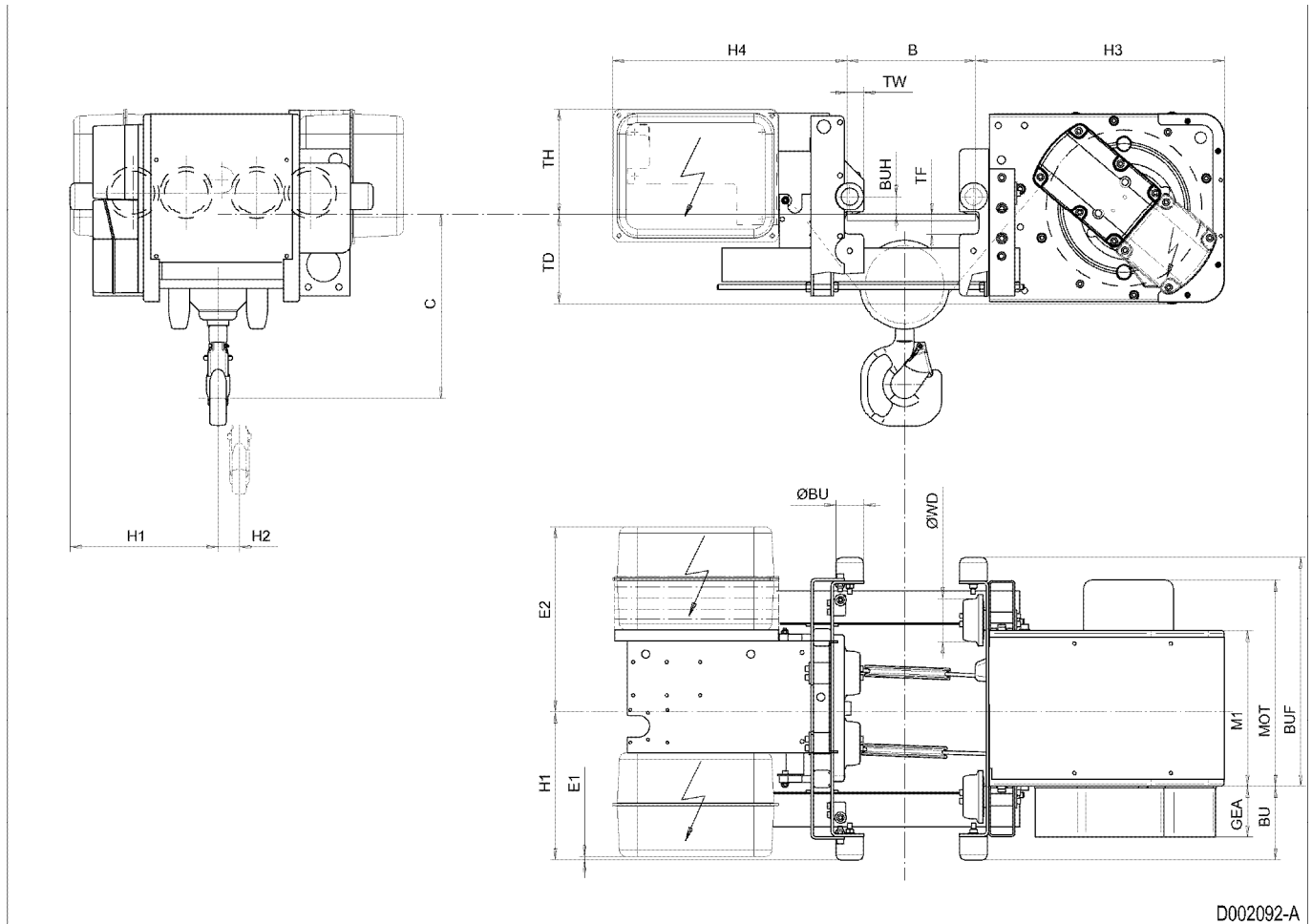
B	C
100 - 199	490
200 - 249	460
250 - 300	425
301 - 350	455
351 - 400	490
401 - 450	520
451 - 490	550

Note: All dimensions in mm.

Note: Weight calculated with P3 motor.

\* Please, disregard the dimension H3\*.

Low Headroom Hoist NC, REEVING: 04



D002092-A