

## 2 LOW HEADROOM HOIST NB, REEVING: 02

### Hoist dimensions

HOL m	Length code	M1 mm	H2 mm	H3 mm	H3* mm	BUF mm	Weight kg
12	A	326	90	495	510	368	175
19	C	456	144	495	510	498	195

### Motor dimensions

Motor	P1	P2	P3	A3	S3
MOT (mm)	386	446	476	446	526
Weight (kg)	21	31	35	32	28

### Trolley dimensions

B min.	B max.	ØWD	ØBU	BU	BUH	E1	E2	GEA	H1	H4	TD
80	410	80	40	42	28	100	532	110	132	524	153
TF	TH	TW									
32	248	29									

D002075\_A  
061739

### C-dimensions

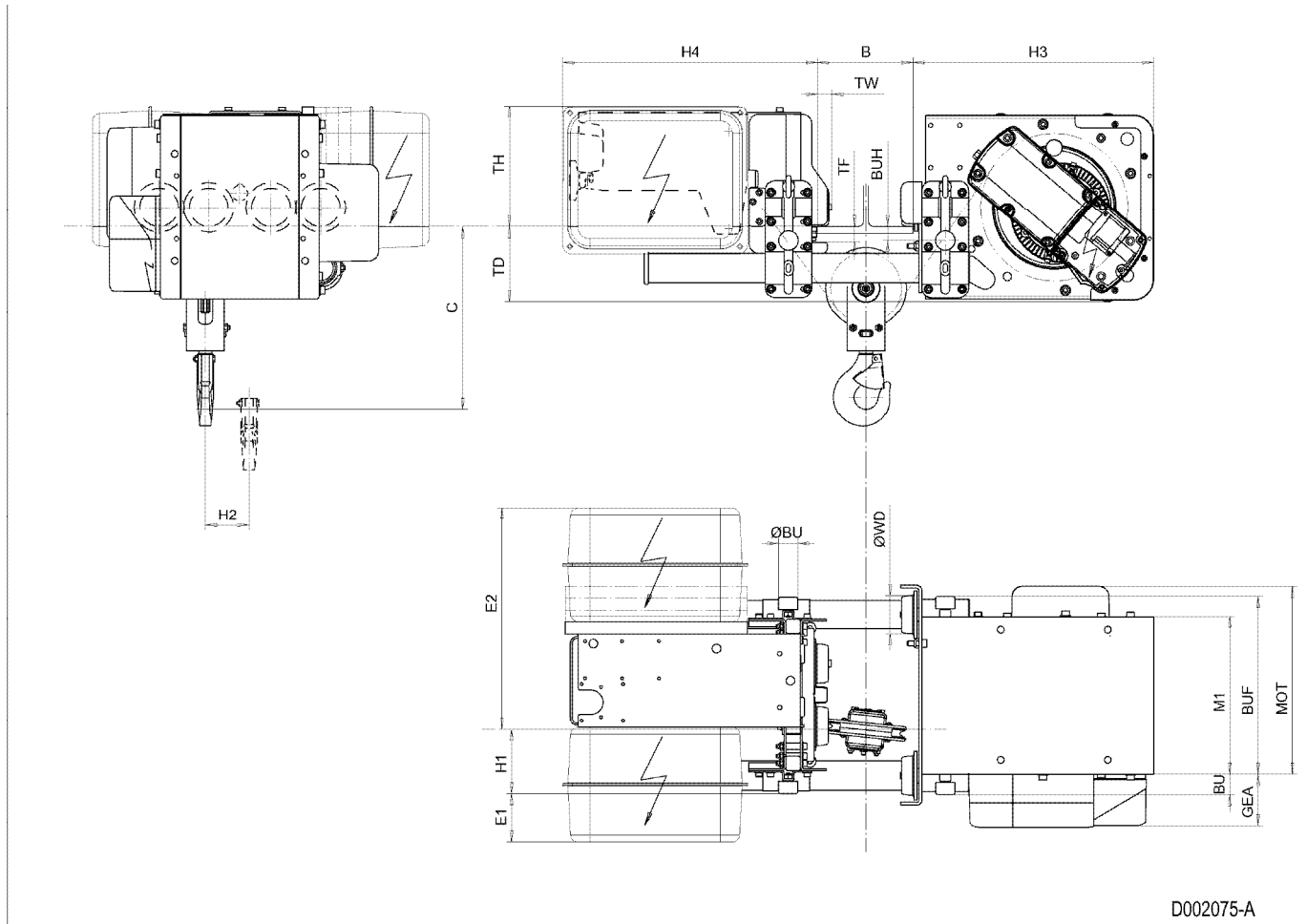
B	C
80 - 270	400
271 - 320	430
321 - 370	460
371 - 410	485

Note: All dimensions in mm.

Note: Weight calculated with P1 motor.

\* Please, disregard the dimension H3\*.

Low Headroom Hoist NB, REEVING: 02



D002075-A